



IMPACT THE FUTURE

PARTNERING TO BUILD TALENT
IN THE INLAND EMPIRE

I.E. YOUTH PAYING THE PRICE



14%

83,000

OF THE TOTAL YOUTH POPULATION
ARE **DISCONNECTED** - ARE NOT IN
SCHOOL OR HAVE A JOB



77%

OF RESIDENTS OVER 25
DO NOT HAVE A 4-YEAR DEGREE



\$36,406

THE AVERAGE BALANCE OF
STUDENT DEBT WITH 40% OF
BORROWERS LEAVING COLLEGE
BEFORE OBTAINING A DEGREE

DISCONNECTED EDUCATION

96%

OF COLLEGES SAY THEIR GRADUATES ARE WELL
PREPARED TO ENTER THE WORKFORCE



11%

OF BUSINESS LEADERS STRONGLY AGREED
WITH THAT ASSESSMENT

(Brandon Busteed 2014, Lumina Foundation/Gallup Poll 2013, and 2013 Inside Higher Ed Survey of College and University Chief Academic Officers Report).

- The conventional education experience remains isolated from meaningful work experience and fails to serve the vast majority of students and businesses



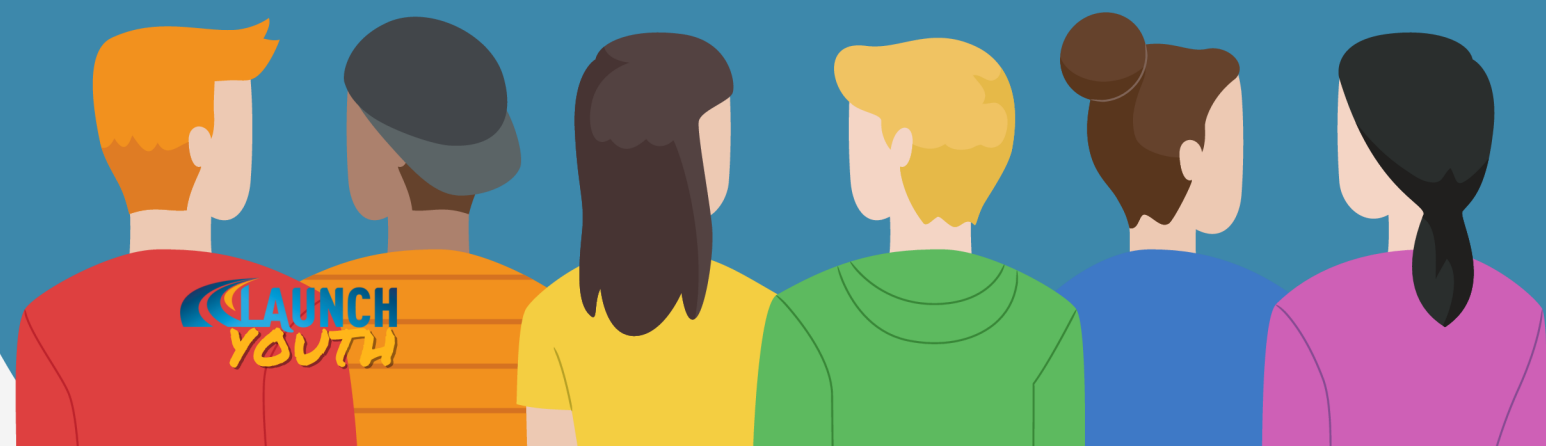
WHAT IF EDUCATION LOOKED DIFFERENT FOR STUDENTS AND BUSINESSES...

YOUTH

- Youth receives relevant technical training and education.
- Schools matches students with local businesses to begin real-world learning
- Students get credit for learning and achieving on the job

INDUSTRY

- Participate in dynamic talent pipelines.
- Guide, and contribute to, education programs that support their workforce.
- Provide advancing students with college cooperative learning programs and industry certifications.
- Benefit from public and community support for providing youth employment opportunities.





ESTABLISHING A MODERN APPRENTICESHIP SYSTEM



MENTOR SUPPORT

Advancing your skills alongside professionals



WORK-BASED LEARNING FACULTY

Learning through facilitated reflection by skilled educators



ON-THE-JOB LEARNING

Intentionally taking on new challenges at work



DIRECTED EDUCATION

Programs designed to drive abstract & technical learning



LAUNCH YOUTH PROMISE PROGRAM

Youth deserve a
pathway to
apprenticeship that
**meets them where
they are...**



ALTERNATIVE
EDUCATION
PATHWAYS &
SCHOOLS

CONVENTIONAL
K-12 DISTRICTS



DISCONNECTED
(NOT EMPLOYED OR ENROLLED)





VISION

- The **LAUNCH** organization intends to create a system for youth apprenticeship programs sponsored by the **region's K-14** and **County Workforce Departments**.
- **LAUNCH Youth** will ensure that Inland Empire youth have access to supported pathways that meet them **where they are** in their educational journey.
- Programs will be **industry-led** and support family-sustaining career pathways.

LAUNCH YOUTH GOALS

- 1 Launch three pilot programs that establish apprenticeship pathways for students in the following communities:
 - Students attending regional **high schools** in CTE Career Pathways
 - Students in County **Alternative Education** programs
 - Disconnected and **WIOA youth**
- 2 Serve a combined group of **60 students** during the pilot phase
- 3 Establish a youth apprenticeship **Industry Leaders Taskforce** among partnering business representatives
- 4 Develop a systems alignment and integration plan for participating institutions that would support scaling the youth apprenticeship program
- 5 By 2030, 5% of high schools students participate in an apprenticeship pathway



LAUNCH YOUTH PARTNERS

RCCD
RIVERSIDE COMMUNITY
COLLEGE DISTRICT



Youth Apprenticeship Pathway Case by LAUNCH Apprenticeship Network, Department of Labor (DOL) – Apprenticeship Building America (ABA) Grant, FoundationCCC is licensed under CC BY 4.0.

This workforce product was funded by a \$4,697,637 grant awarded to Riverside Community College District by the U.S. Department of Labor (DOL) – Apprenticeship Building America (ABA) Grant. The total cost of the product is financed with 100% Federal funds. The product was created by the recipient and does not necessarily reflect the official position of DOL-ETA. DOL-ETA makes no guarantees, warranties, or assurances of any kind, express or implied, with respect to such information, including any information on linked sites and including, but not limited to, accuracy of the information or its completeness, timeliness, usefulness, adequacy, continued availability, or ownership. This product is copyrighted by the institution that created it.